

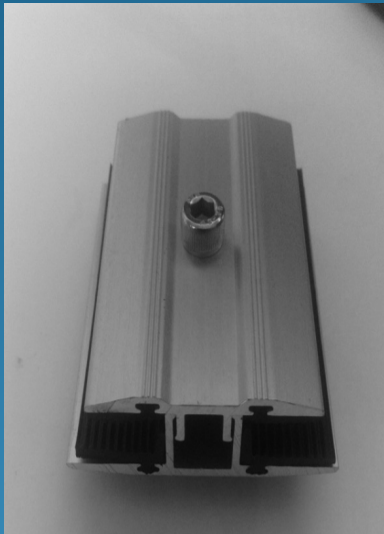
ALOMEX PROFILES PVT LTD

Two Piece Module
Clamps
NS 24-1084

*First
Solar
FS4
Clamp*



Features of Two Piece Clamps



- Certified by First Solar®
- Rubber ensures a secure hold of the PV Modules
- High Grade Aluminium Alloy & Temper with best Structural behavior
- Base plate support at bottom ensuring hold on modules from Top & Bottom
- Sliding of Top & Bottom piece

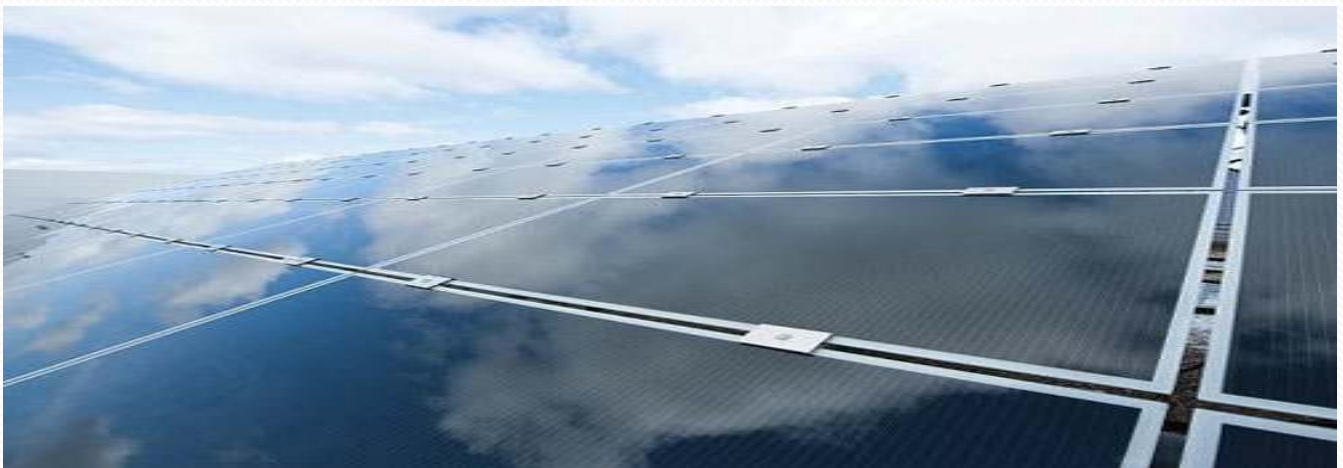


ALOMEX PROFILES PVT LTD
G34 & G35 SIPCOT INDUSTRIAL PARK,
SRIPERUMBUDUR
TAMIL NADU,
INDIA, 602 105
WEBSITE: WWW.ALOMEXPROFILES.COM

The superior concept of the design brings benefit starting with installation. First Solar Thin-film Modules can be installed safely due to support from a base plate. The two pieces (Top & Bottom) ensure the module rests firmly on the base plate with Rubber on it. The sliding of the top portion makes installation very simple and quick. PV system performance is supported by shade-free screw connection.



The extended lower developed plate with rubber lip guarantees an easy and secure installation.



TECHNICAL DATA FOR DOUBLE PIECE DESIGN

CHARACTERISTICS	MID CLAMP	END CLAMP
Hole diameter Ø suitable for	M6 Bolts	M6 Bolts
Available Length of the module clip	70 ,80 & 100 mm length (Tolerance DIN ISO 2768 -1 ± 1.5mm)	70,80 & 100mm length (Tolerance DIN ISO 2768 -1 ± 1.5mm)
Possible module types	First solar module series FS 2,FS 3 & FS 4	First solar module series FS 2,FS 3 & FS 4
Utilizable for the following laminate thickness	6.0mm to 9.00mm Adjustable	6.0mm to 9.00mm Adjustable
Material	Aluminium 6063&6005 Alloy & TPE Rubber	Aluminium 6063&6005 Alloy & TPE Rubber
Insert material	UV –resistant and weatherproof	UV –resistant and weatherproof
Shore hardness	60 shore A ± 5 in the mounting area	60 shore A ± 5 in the mounting area
Minimum support area	>38mm	>38mm
Usable as an edge clip without addition components	yes	yes

APPLICATION NUMBER : PD-5-321-180

MID CLAMP



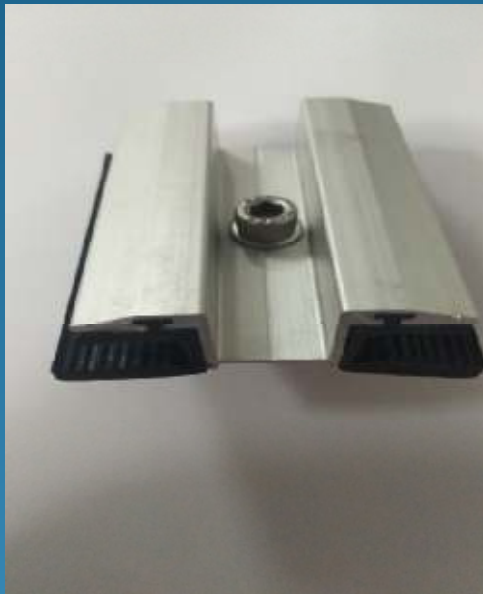
END CLAMP



ALOMEX PROFILES PVT LTD

**Single Piece
Module Clamps
NS 24-1084**

*First
Solar
FS4
Clamp*



Features of Single Piece Clamps

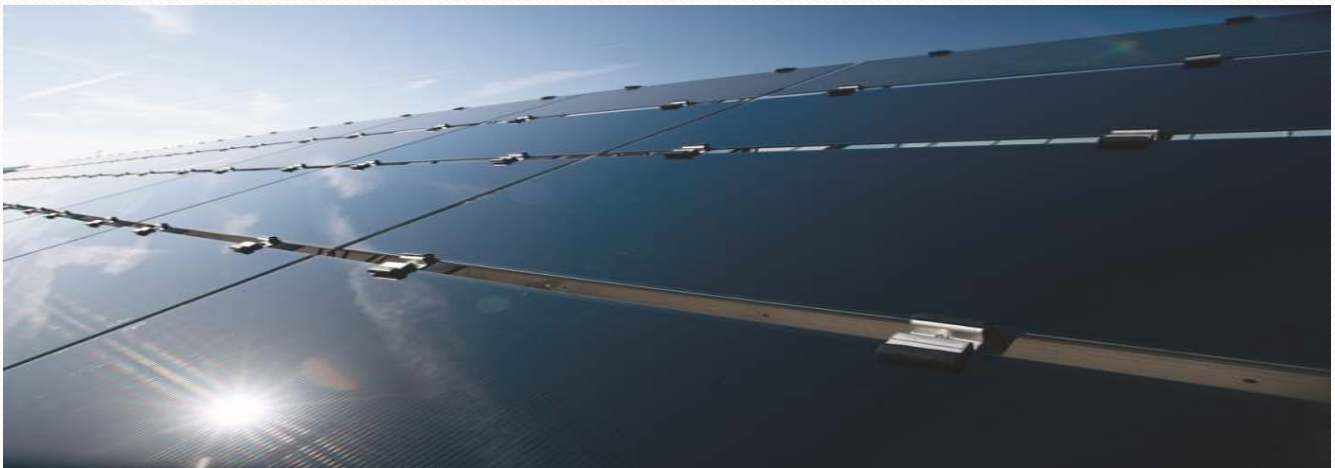
- Certified by First Solar®
- Rubber ensures a secure hold of the PV Modules
- High Grade Aluminium Alloy & Temper with best Structural behavior
- Light-weight clips with best static characteristics
- Practical end stop to prevent module strains



The superior concept of the design brings benefit starting with installation: The 6.7 mm laminates can be installed safely due to the extended lower rubber lip. The central connection point (customized for different screws) and the protection bar help avoid too high tightening torques during installation. Above that the PV system performance is guaranteed by shade-free screw connection.



The extended lower developed plate with rubber lip guarantees an easy and secure installation.



ALOMEX PROFILES PVT LTD
G34 & G35 SIPCOT INDUSTRIAL PARK,
SRIPERUMBUDUR
TAMIL NADU,
INDIA, 602 105

WEBSITE: WWW.ALOMEXPROFILES.COM

TECHNICAL DATA FOR SINGLE PIECE DESIGN

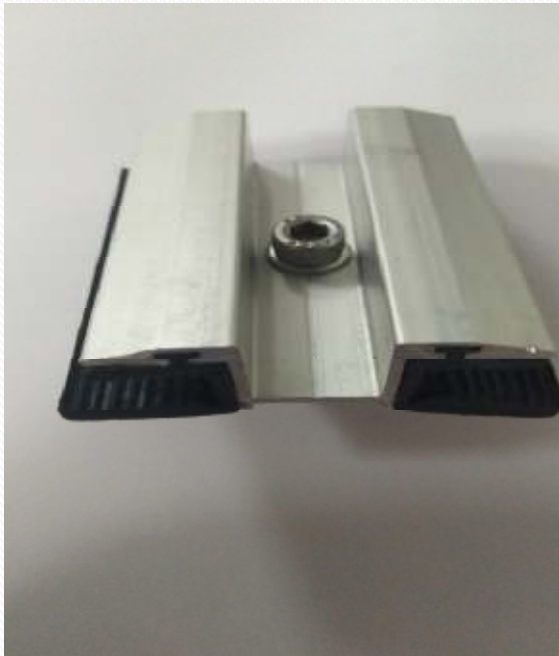
CHARACTERISTICS	MID CLAMP	END CLAMP
Hole diameter \varnothing suitable for	M6&M8 Bolts	M6&M8 Bolts
Available Length of the module clip	70 &80 mm length (Tolerance DIN ISO 2768 -1 \pm 1.5mm)	70&80 mm length (Tolerance DIN ISO 2768 -1 \pm 1.5mm)
Possible module types	First solar module series FS 2,FS 3 & FS 4	First solar module series FS 2,FS 3 & FS 4
Utilizable for the following laminate thickness	6.7mm	6.7mm
Material	Aluminium 6063&6005 Alloy	Aluminium 6063&6005 Alloy
Insert material	UV –resistant and weatherproof	UV –resistant and weatherproof
Shore hardness	60 shore A \pm 5 in the mounting area	60 shore A \pm 5 in the mounting area
Minimum support area	>18mm	>18mm
Usable as an edge clip without addition components	yes	yes

APPLICATION NUMBER : PD-5-321-161

MID CLAMP



END CLAMP



ALOMEX PROFILES PVT LTD

Two Piece Module
Clamps
NS 24-1084

*First
Solar
FS4
Clamp*



Features of Two Piece Clamps

- Certified by First Solar®
- Rubber ensures a secure hold of the PV Modules
- High Grade Aluminium Alloy & Temper with best Structural behavior
- Base plate support at bottom ensuring hold on modules from Top & Bottom
- Sliding of Top & Bottom piece

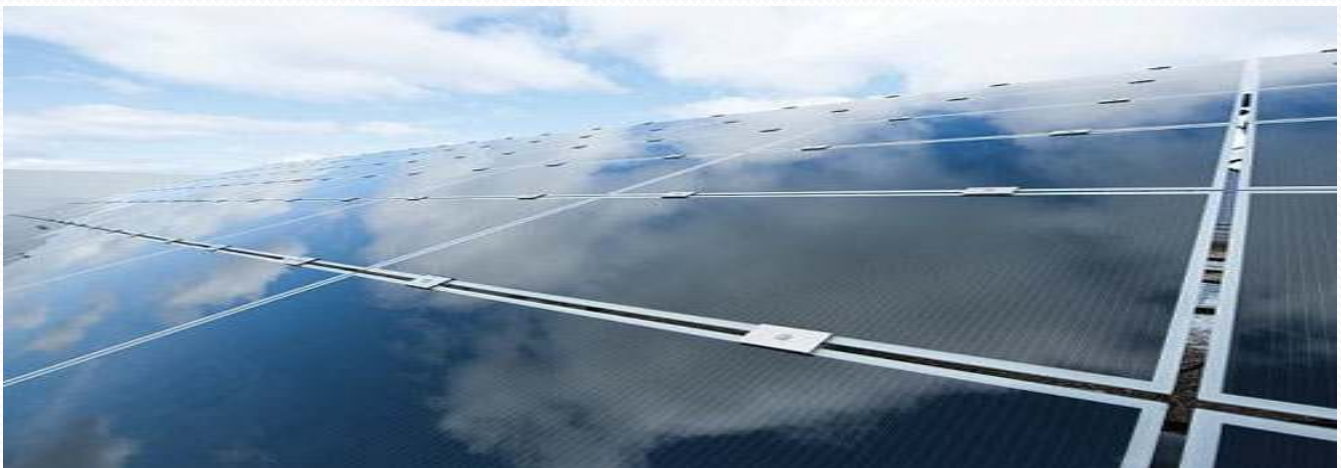


ALOMEX PROFILES PVT LTD
G34 & G35 SIPCOT INDUSTRIAL PARK,
SRIPERUMBUDUR
TAMIL NADU,
INDIA, 602 105
WEBSITE: WWW.ALOMEXPROFILES.COM

The superior concept of the brings benefit starting with installation. First solar Thin-film solar modules can be installed safely due to support from a base plate. The two pieces (Top & Bottom) ensure the module rests firmly on the base plate with Rubber on it. The sliding of the top portion makes installation very simple and quick. PV system performance is supported by shade-free screw connection.



The extended lower developed plate with rubber lip guarantees an easy and secure installation.



TECHNICAL DATA FOR DOUBLE PIECE DESIGN

CHARACTERISTICS	MID CLAMP	END CLAMP
Hole diameter \varnothing suitable for	M6&M8 Bolts	M6&M8 Bolts
Available Length of the module clip	70 & 80 mm length (Tolerance DIN ISO 2768 $-1 \pm 1.5\text{mm}$)	70 & 80 mm length (Tolerance DIN ISO 2768 $-1 \pm 1.5\text{mm}$)
Possible module types	First solar module series FS 2,FS 3 & FS 4	First solar module series FS 2,FS 3 & FS 4
Utilizable for the following laminate thickness	6.0mm to 9.00mm Adjustable	6.0mm to 9.00mm Adjustable
Material	Aluminium 6063&6005 Alloy	Aluminium 6063&6005 Alloy
Insert material	UV –resistant and weatherproof	UV –resistant and weatherproof
Shore hardness	60 shore A ± 5 in the mounting area	60 shore A ± 5 in the mounting area
Minimum support area	>38mm	>38mm
Usable as an edge clip without addition components	yes	yes

APPLICATION NUMBER : PD-5-321-227

MID CLAMP



END CLAMP

